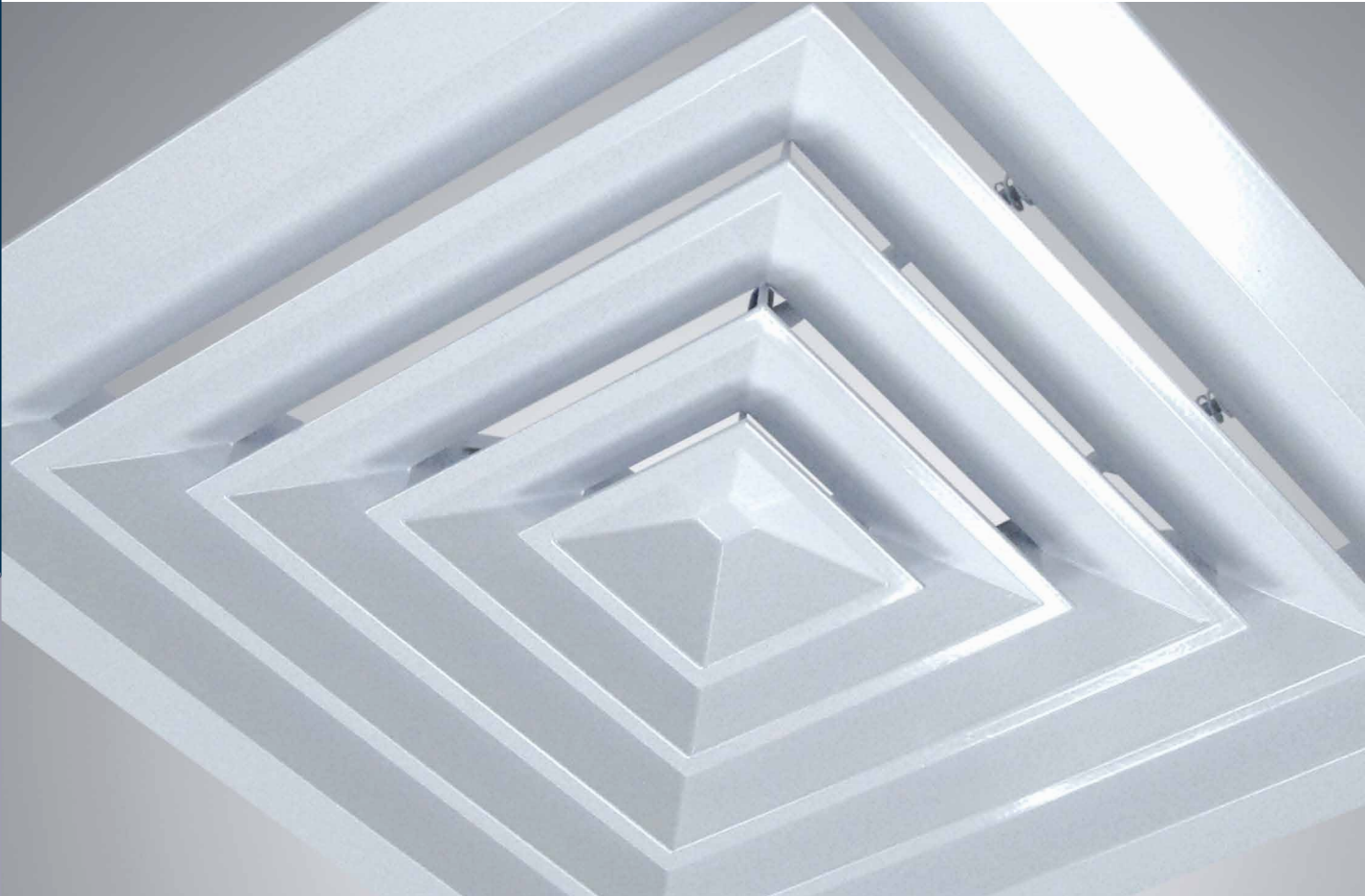













Air Distribution

Product Range





Contents Page

	Temperzone Air Distribution	4
	Ceiling Air Outlets	5
	Sidewall Air Outlets	8
	Return, Exhaust & Transfer Grilles	10
	Linear Air Outlets	11
	Floor Swirl Outlets	12
	Displacement Outlets	13
	TRD Air Regulating Damper	14
	Outside Louvres	15
	Accessories	16
	Custom Design	18



Temperzone Air Distribution

Temperzone Air Distribution

Temperzone combined with Smartemp offers the full range of air distribution products allowing the flexibility to formulate customised solutions to meet all of your air distribution requirements. As one of the largest and longest serving designers and manufacturers of air distribution equipment to NZ our products and solutions are at the forefront of the air distribution industry. With a strong focus on efficiency and design temperzone's comprehensive product offering provides solutions that achieve exactly what you want while assisting to create the aesthetic you desire.

"Temperzone with Smartemp provide the full range of quality air distribution products to meet all your needs"

A business relationship that's efficient and reliable creates success for all involved, which is why temperzone strives to deliver quality and timely service. Custom design engineering and efficient manufacturing processes allow products to be customised to meet the needs of your project quickly and cost effectively. Temperzone operates a quality management system that conforms to AS/NZS ISO 9001:2008 and with a large inventory of standard stock and branches in Auckland, Wellington and Christchurch, temperzone makes sure your needs are met every step of the way.

Smartemp Air Diffusion

Temperzone is an exclusive distributor of Smartemp air diffusion products which are specifically developed for the higher heat loads and elevated humidity levels typical of Asia-Pacific climates. The products are characterised by high levels of draught-free comfort, and generally by their ability to discharge relatively high airflow rates in relation to diffuser size. This makes it possible to save on ducting and to minimise diffusers in the space.



Temperzone Ltd, Auckland



Temperzone Air Distribution Manufacturing, Auckland

Green Star

Temperzone is committed to providing air distribution systems that provide a healthy and comfortable indoor space in an environmentally responsible manner.

In designing NZ's first 6-Green star rated building the Christchurch Civic Centre, specifiers chose to install hundreds of temperzone TRD dampers to control the airflow and cavity temperature of the prominent double-skin thermal/solar buffer façade.

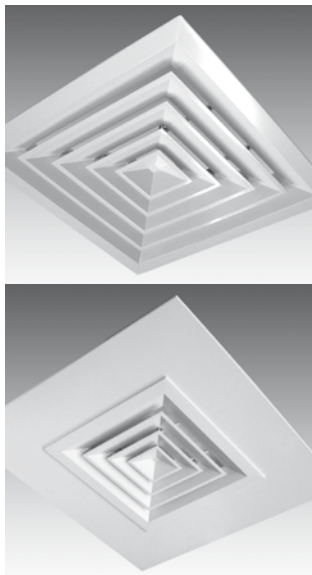


Ceiling Air Outlets

Ceiling Air Outlets

Temperzone designed and manufactured Ceiling Air Outlets distribute air in a variety of fashions providing uniform temperature distribution. Combined with Smartemp ceiling diffusers temperzone has the full range of air outlets to meet any requirements, from straight forward installations to highly technical customised projects.

Refer to www.temperzone.com for further information.



SH Series without / with plaque

SH Series Ceiling Diffusers

SH Series square and rectangular ceiling diffusers are available in a wide variety of sizes and air patterns. A very versatile diffuser allowing air to be directed where it's needed, Its clean lines allow it to blend into or enhance any space. The SH Series is a popular choice as it is able to span a wide range of applications e.g. offices, shops, foyers, restaurants etc.

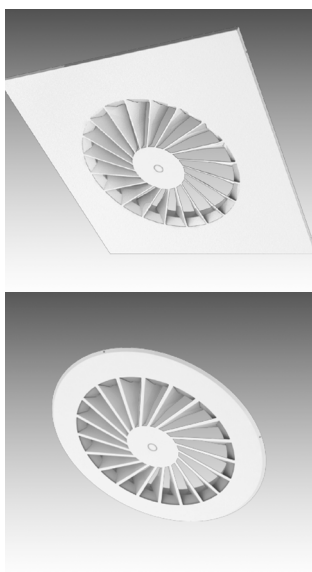
Volume flow rate range 35 – 2,500 l/s

Nominal sizes 150, 225, 300, 375,
450...900 mm
square or rectangular

Discharge height 2 – 5.6 m

Features

- Attractive design and robust aluminium construction with powder-coat finish
- SH Series maintains an unbroken horizontal air pattern from maximum to minimum air flow providing an excellent choice for us with variable air volume (VAV) systems
- Removable/interchangeable cores
- Available in lay-in (1/2 tile) plaques
- 4-way diffusers in stock. Other core patterns made to order
- Quick and easy installation
- Suitable for ceiling heights up to 3.3m.



HSC-FD Fixed Helical Swirl Diffuser

The industry's highest performing, high volume flow, fixed vane VAV swirl diffuser. High capacity swirl diffuser with high induction, fixed horizontal discharge pattern from swirl vanes flush with diffuser face, optionally screened by perforated cover plate. Unique helical twist vane design provides high airflow capacity, and allows low-temperature VAV ($T_{\text{supply}} \geq 5^\circ\text{C}$) with turndown to 25%. May be mounted flush with ceiling or free-hanging.

Volume flow rate range 10 – 440 l/s

Nominal sizes Ø250, Ø355 and Ø500 mm

Discharge height 2.4 – 4.5 m

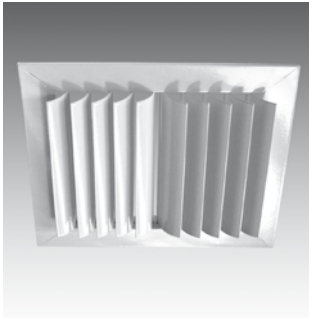
Features

- Flush face swirl diffuser with 20 off-set radial vanes.
- High airflow capacity.
- Fixed horizontal discharge pattern.
- Powder coated cold rolled steel. Stainless steel available on request.
- Ceiling mounted or freely suspended.
- Suitable for CAV or VAV with large range (eg turndown to 25%-28% @ $T_{\text{supply-room}} = -16\text{ K}$).
- Suitable for low temperature supply air ($\geq 5^\circ\text{C}$ and $\Delta T_{\text{supply-room}} \geq -16\text{ K}$).
- Swirl vanes with helical twist (flatter peripheral vane angle) extend VAV operating range - patents pending.
- Swirl vanes with cambered leading edges reduce noise & pressure loss.
- Bell-mouth extends VAV operating range.
- Optional neck reducers for reduced airflow rates.
- Optional blanking segments for 3-way blow (270°) & 2-way blow ($2 \times 90^\circ$ or 180°) discharge.
- Square (standard) or round face (optional).

SMARTEMP
IN COMFORT



Ceiling Air Outlets



5180 Series Eyelash Multi-Directional Outlet

Curved deflection vanes are individually adjustable and with a variety of air patterns allows air to be directed as needed in any direction. Ideal for rooms of unusual shape, ceiling height, ceiling slope, or where fixed type diffusers may not be suitable.

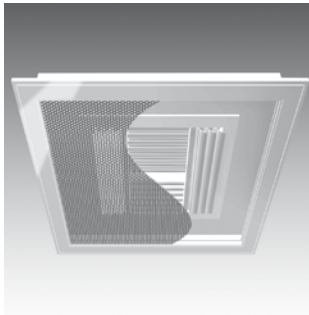
Volume flow rate range 26 – 3,300 l/s

Nominal sizes 150 – 900 mm square or rectangular

Throw 1.0 – 24 m

Features

- Flat frame that maintains a low unobtrusive profile against any ceiling
- Available in 1, 2, 3 or 4 way styles, providing a choice of 14 basic air pattern variations
- No tools needed for adjustment of vanes



F1100 Series Square Perforated Face Diffuser

The curved deflection vanes are individually adjustable, without special tools, and accessible behind the hinged perforated face allowing the diffuser to appear unchanged. Air can be directed as needed in any direction, ideal for rooms of unusual shape, ceiling height, ceiling slope, or where fixed type diffusers may not be suitable.

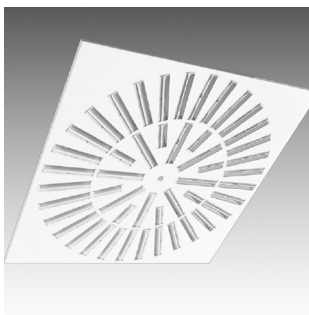
Volume flow rate range 30 – 955 l/s

Nominal sizes 150 – 600 mm square only

Throw 0.6 – 22.3 m

Features

- Multi-pattern supply air grille/diffuser available in 1, 2, 3, and 4 way air patterns
- Curved (eye lash) deflecting vanes behind a hinged perforated easy to clean face
- The combination of curved vanes and perforated face provides a high rate of induction, and has superior anti-smudge characteristics due to centre aspiration.



SSC-AD Slotted Swirl Diffuser

Patented high induction radially slotted swirl diffuser with manually adjustable discharge direction and air pattern (4-way, 3-way & 2-way blow) for installation flush with ceiling or free-hanging. Unique vane design offers highest airflow capacity of all radial slot swirl diffusers, and allows low-temperature VAV ($T_{\text{supply}} \geq 5^\circ\text{C}$) with turndown to 25%.

Volume flow rate range 20 – 330 l/s

Nominal sizes DN300, DN400, DN500, DN600

Discharge height 2.5 – 4.5 m

Features

- Flat metal face with inset rectangular plastic swirl vanes.
- Suitable for VAV systems, including turndown to 25% with low temperature supply ($T_{\text{supply}} \geq 5^\circ\text{C}$), where $\Delta T_{\text{supply-room}} \geq -16\text{K}$.
- Swirl vanes individually adjustable from room (vertical, horizontal, closed)
- 4-way blow (360°), 3-way blow (270°) or 2-way blow (2x90° or 180°) patterns available by adjusting relevant swirl vanes.
- Square face standard, circular optionally available.

SMARTEMP
IN COMFORT



Ceiling Air Outlets



RPD Round Ceiling Diffuser

The RPD round plastic diffuser provides an alternative to the more common square diffuser. Its round shape permits a 360° even air distribution pattern. Easily installed the RPD's appearance blends tastefully with most room decors and has the advantage of being used in many different applications and settings.

Volume flow rate range 10 – 300 l/s
Nominal sizes Ø150, Ø200 and Ø250 mm
Discharge height 2 – 3.3 m

Features

- Unique spring clip mounting system allows them to be easily installed from below the ceiling, after the attachment of any flexible duct
- Ideal for use as a supply air outlet or extract inlet in bathrooms and toilets
- Adjustable core to regulate air flow
- No need for additional dampers
- No adaptor is required when fitting round flexible ducting
- Off-white non-reflective etched surface which is colour fast, i.e. will not yellow.



HSC-AD Adjustable Helical Swirl Diffuser

The world's highest capacity swirl diffuser. Patented high capacity, low profile swirl diffuser with variable air pattern adjustment for cooling and heating of large volume or high ceiling spaces. Installation flush with ceiling or free-hanging. Swirl vanes with helical twist deliver high volume airflow capacity and large airflow range. Adjustable blades and guide-ring assembly slide helically across radially off-set swirl vanes flush with diffuser face for variable discharge direction adjustment (manual, thermal or electric) at a low and substantially constant pressure loss and with high induction discharge in both cooling and heating modes.

Volume flow rate range 70 – 4000 l/s
Nominal sizes Ø250 – Ø1000 mm
Discharge height 2.5 – 15 m

Features

- High capacity variable air pattern swirl diffuser for large volume or high ceiling spaces.
- Low profile design for installation in restricted ceiling void spaces.
- Size DN1000 is the world's highest capacity commercially available swirl diffuser.
- Ceiling mounted or freely suspended.
- Substantially constant pressure air pattern adjustment from horizontal to vertically downwards.
- Air pattern adjustment via adjustable swirl vanes affixed to helically adjustable guide-ring.

Adjustment:

- **Manual** - all sizes; or
- **Electric** - all sizes; or
- **Thermal** - sizes DN250, DN355 & DN500 only.
- Helical twist of swirl vanes reduces vane pitch towards the periphery for increased airflow operating range.
- Steep central swirl vane pitch increases airflow capacity and reduces pressure drop.
- Four nominal neck sizes, each available with an optional reducer for reduced airflow.
- Airflow rate range reduces by approximately 30% with each reduction in effective neck size.
- Circular face shape standard for all sizes.
- Optional square face for sizes DN250 - DN500, suitable for ceiling grids from 300 mm up to 600 mm, depending on diffuser neck size.
- Substantially flush face with 20 radially off-set swirl vanes.

SMARTEMP
IN COMFORT

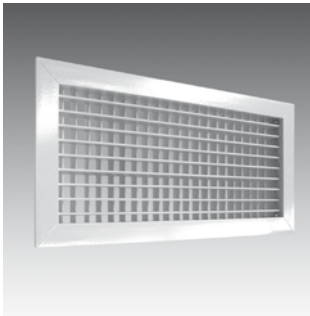


Sidewall Air Outlets

Sidewall Air Outlets

Temperzone designed and manufactured Sidewall Air Outlets distribute air in a variety of fashions providing uniform temperature distribution. Combined with Smartemp sidewall diffusers temperzone has the full range of air outlets to meet any requirements, from straight forward installations to highly technical customised projects.

Refer to www.temperzone.com for further information.



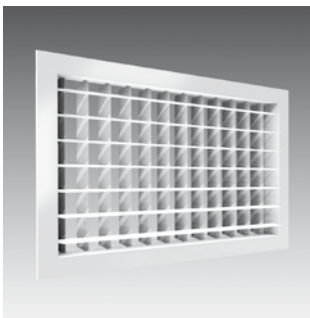
5880 Series Double Deflection Grille

The fully adjustable deflection vanes provide maximum air pattern flexibility in two planes - vertical and horizontal - making it suitable for a wide variety of applications of differing capacity e.g. shops, offices, supermarkets etc.

Volume flow rate range 20 – 3,000 l/s
Nominal sizes 100 - 1800 mm
square or rectangular
Throw 2 – 30 m

Features

- High capacity & long throw capability enables air distribution across large open rooms
- Performance can be customised to suit most space requirements due to an extensive size range and multi-plane adjustment
- Grilles can be specified with the front vanes horizontal or vertical 10 mm (5885 Series) & 20 mm (5880 series) spaced vanes both suit lighter commercial applications



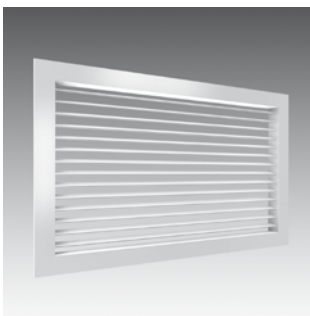
56880 Series Double Deflection Grille

The 56880 series fully adjustable deflection vanes are wider than the 5880 series and provide maximum air pattern flexibility in two planes - vertical and horizontal - making it suitable for even higher capacity industrial applications e.g. factories

Volume flow rate range 20 – 5,000 l/s
Nominal sizes 100 - 1800 mm
square or rectangular
Throw 4 – 60 m

Features

- 40 mm spaced vanes make it suited to industrial applications such as factories where higher capacity and longer throw are needed
- Performance can be customised to suit most space requirements due to an extensive size range and multi-plane adjustment
- Grilles can be specified with the front vanes horizontal or vertical
- Strong aerofoil blade construction



580 Series Single Deflection Grille

Adjustable single deflection supply air grilles for sidewall mounting where their high capacity and long throw capability enables them to provide air distribution across large open rooms, e.g. supermarkets, warehouses, factories.

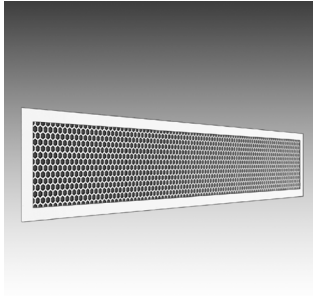
Volume flow rate range 20 – 3,000 l/s
Nominal sizes 100 - 1800 mm
square or rectangular
Throw 2 – 30 m

Features

- Grilles are available with 10 mm (585 Series) or 20 mm (580 Series) vane spacings and have a flat surface mounting frame.
- Single set of vanes, each vane individually adjustable at the face of the grille, without tools
- Grilles can be specified with the vanes horizontal or vertical.



Sidewall Air Outlets



PMW-AD Perforated Multistream Diffuser

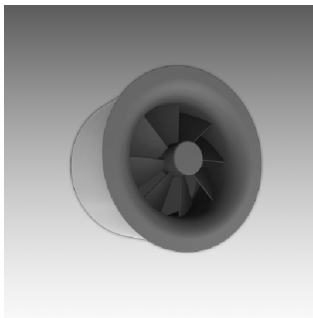
Patented high induction side-blow diffuser with manually adjustable multi-stream discharge pattern, for draught-free air supply from walls or bulkheads.

Volume flow rate range 30 – 500 l/s
Nominal length 0.6 m, 0.95 m, 1.5 m, bespoke lengths ≤ 1.5 m available
Discharge height 2.5 – 4 m



Features

- Highly inductive multi-stream discharge for draught-free comfort.
- Multi-stream discharge direction manually adjustable via Allen key through diffuser face.
- Black plastic discharge elements (ABS, V0 fire rated) break the airflow into a multitude of individual air streams of differing discharge direction.
- Adjustable air streams have four different discharge angles, ensuring highly inductive, broad dispersion of the supply air flow for draught-free air supply.
- Perforated discharge face and frame of metal, painted to colour of choice.



CSS-FD Auditorium Step Swirl Diffuser

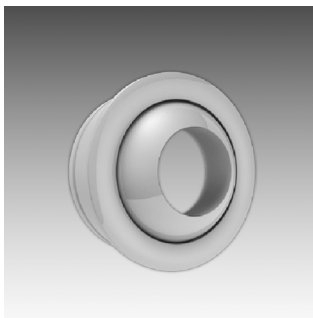
High induction circular step swirl diffuser for location in the vertical staircase or step face, especially beneath seats, in tiered auditoria and lecture theatres.

Volume flow rate range ≤ 16 l/s
Nominal sizes Ø100, Ø125 mm
Sound Power ≤ 18 dB(A)



Features

- For tiered auditoria and lecture theatres
- Location independent of seating
- Built into step front at approximately 100 mm height
- High induction swirl discharge breaks down discharge velocity and equalises temperature.
- Installation in wooden or concrete steps
- Connection to pressurised plenum



CNW-AD Circular Nozzle

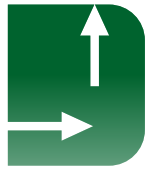
Eyeball jet nozzle with adjustable discharge direction, for installation in ducts, walls, bulkheads or plenums.

Volume flow rate range 8 - 1000 l/s
Nominal neck sizes DN100, DN125, DN160, DN200, DN250, DN315, DN400, DN500, DN630
Throw 3 - 60 m
Discharge height 3 - 10 m



Features

- Round eyeball nozzle
- Jet discharge for long throw - DN100 to DN500
- Optional swirl discharge for reduced throw - DN250 to DN500
- Manual adjustment - DN100 to DN630
- Optional actuator adjustment (electric, or thermal with adjustable bias) - DN315 to DN630
- 60° arc of discharge direction adjustment (ie ±30° from central axis)
- Connection to pressure plenum, or to flexible or spiral duct via rear-side entry spigot
- Powder coated aluminium

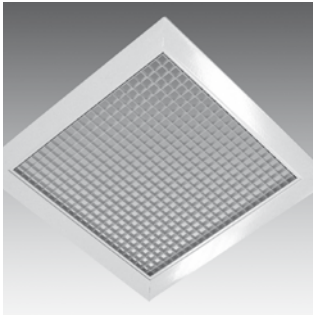


Return, Exhaust & Transfer Grilles

Return, Exhaust & Transfer Grilles

Temperzone manufactures a variety of grilles for the return or exhaust of air from the conditioned space. Different designs are available depending on the application, and products can be customised to any specification. Linear bar grilles are an option as returns and complement contemporary decor.

Refer to www.temperzone.com for further information.



EGC-5 Series Egg Crate Grille

The EGC-5 series egg crate grilles have a stylish frame with squared aluminium lattice (egg crate) return/exhaust air grille, suitable for wall or ceiling mounting.

Volume flow rate range 10 – 4,700 l/s
Nominal sizes 100 - 1800 mm
square or rectangular

Features

- There are 3 choices of core style - straight or slant and perforated. The slant core (EGC-5S) has the advantage of obscuring the ceiling interior from most viewpoints
- Egg Crate grille can be fitted directly to T-rail suspended ceiling systems
- The perforated face model (EGC-5P) has an easy to clean face
- The hinged model (EGC-5_/HF) provides the convenience of a filter and/or access through the sub-frame opening



5600 Series Non-Vision Door Grille

The stylish clean lined non-vision transfer air grille is designed for use in doors, walls, partitions or other applications where constant air passage with non-vision is desired.

Volume flow rate range 10 – 2,500 l/s
Nominal sizes 150 - 1200 mm
square or rectangular

Features

- Available in four basic models, including a light proof model for dark room applications
- Fixed horizontal vanes of inverted V-shape, housed within the frame, spaced at 12 mm centres, providing complete non-vision
- When used with the matching backing flange (5600A) these grilles can be fitted in doors or partitions



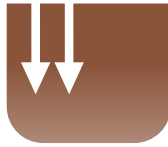
S580 Series Fixed Blade Grille

The S580 is a contemporary styled return/exhaust air grille with 35° fixed deflection vanes, spaced to match supply air grilles. Suitable for wall or ceiling mounting.

Volume flow rate range 10 – 10,000 l/s
Nominal sizes 100 - 1500 mm
square or rectangular

Features

- Available in horizontal or vertical models
- Options include a choice of two vane spacings and fixed or hinged frame, with or without a washable panel filter
- The hinged models (S580/HF, S585/HF) provide the convenience of a filter and/or access through the sub-frame opening
- All models have fixed deflection vanes designed to match the Series 5880 supply air grilles
- Series S580 has 20 mm vane spacing; Series S585 has 10 mm vane spacing making it more sight proof.

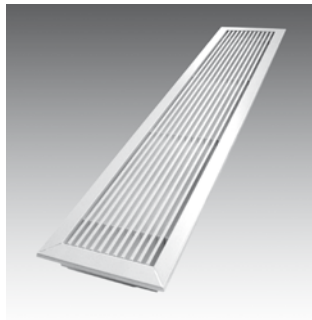


Linear Air Outlets

Linear Air Outlets

The versatility of being installed in the ceiling, sidewall or floor, being customisation to variable air volumes and sizing allows the temperzone range of Linear Air Outlets to be utilised in a variety of applications. As well as the functional flexibility they provide they're also perfect for architectural applications where clean lines enable them to mould seamlessly into or enhance the aesthetics of their surroundings.

Refer to www.temperzone.com for further information.



1500 Series Linear Bar Grille

Fixed deflection linear bar supply or return air grilles can be mounted in a wide range of fashions including ceiling, sidewall, sill, or floor mounting. With clean elegant lines it has a very aesthetic appeal enabling it to mould seamlessly into any contemporary setting.

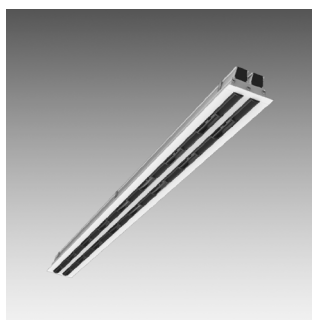
Volume flow rate range 23 – 3,900 l/(s · m)

Nominal sizes up to 600mm wide, single piece lengths up to 2.4 m long

Throw 0.6 – 24 m

Features

- Suitable for wall, floor or ceiling mounting as individual grilles, or as continuous butt-jointed sections
- Std. manufacture is with closed end sections
- Grille bars are fixed at 12 mm centres and are mechanically bonded to support multilions and frames
- Series 1500 has 0° deflection blades; Series 1515 has 15° deflection blades.



LMC-AD Linear Multistream Ceiling Diffuser

High induction, 1-way blow or 2-way blow linear ceiling diffuser with 1 to 8 slots, each with multiple barrel nozzles discharging alternating multi-stream mini-jets. Mini-jets are individually adjustable through 90° to alter air pattern from horizontal through diagonal to vertical. Nozzle barrels may be rotated to shut off airflow. Suitable for low temperature supply air ($\geq 5^{\circ}\text{C}$) and CAV or VAV systems with extended turndown. Installation flush with ceiling or free-hanging.

Volume flow rate range 6 – 228 l/(s · m)

Element width

- Flangeless: $n \times 28 + 3$ mm, where n = number of rows (1 to 6 rows)
- Flanged: $n \times 28 + 20$ mm, where n = number of rows (1 to 6 rows)

Length 1200 mm neck, 1195 mm face, other lengths available on request

Discharge height 2.4 – 4.5 m

Features

- 1 - 8 slot configurations
- 1 or 2 way discharge patterns
- Adjustable horizontal, diagonal or vertical discharge direction
- High induction alternating mini-jet discharge
- Barrel nozzles individually adjustable through 90°
- Barrel nozzles of plastic, black
- Side and end profiles of aluminium, natural anodised or powder coated
- Flanged or flangeless side and end profiles
- Installation flush with ceiling or free hanging

SMARTEMP
IN COMFORT



Floor Swirl Outlets

Smartemp Floor Swirl Outlets

These swirl diffusers are designed to combine the concept of high volume flow rate mixed airflow in the occupied space, required to remove the high solar and IT equipment heat loads in many offices, with the displacement airflow concept of stratification above head height. Highly inductive supply air draws in large quantities of room air to produce a slow diverging airstream, diluted to room temperature, which maintains the stratification of displacement airflow providing a draught-free uniform temperature distribution.

Refer to www.temperzone.com for further information.



ISF-AD Inclined Floor Swirl Diffuser

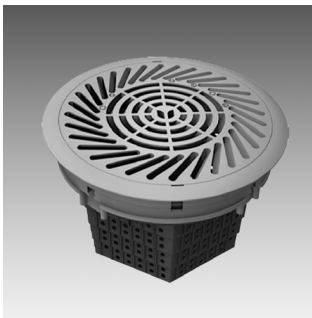
The world's only floor swirl diffuser with user-adjustable airflow rate, air motion, and air direction. Patented directional floor swirl diffuser with user-adjustable air pattern from a rotatable inclined air stream to a vertical air plume. User-adjustable air direction for increased / decreased air motion. User-adjustable airflow rate for increased / decreased cooling / heating. Substantially constant throw height of the inclined air stream to head height of seated occupants prevents cold feet / warm head at low airflow rate settings. An optional electric actuator provides VAV modulation.

Volume flow rate range 10 - 55 l/s
Nominal size Ø200 mm
Discharge height 0 m

Features

- User-adjustable airflow rate.
- User-adjustable inclined air stream direction.
- User-adjustable air motion (gentle inclined breeze to draught-free vertical plume).
- User-adjustability by rotation of the diffuser face.
- VAV damper user-adjustable or electrically motorised.
- Constant throw to head height of occupants throughout VAV damper range prevents cold feet / warm head at low airflow rates.
- Low profile basket and damper assembly, suitable for shallow floor plenum.

SMARTEMP
IN COMFORT



ASF-AD Auditorium Floor Swirl Diffuser

Patented directional floor swirl diffuser with rotatable inclined air pattern, for location beneath auditorium or lecture theatre seating.

Volume flow rate range 5 - 17 l/s
Nominal sizes DN200
Discharge height 0 m

Features

Unique inclined swirl discharge pattern:

- Directs supply air rearwards, away from sensitive leg regions of seated occupants.
- Counteracts cascade effect of cool microclimate down seating tears, reducing draught threat from rear.
- Allows air to be directed towards underside of seats even if diffusers are marginally offset from seat centres, preventing draughts between seats.

SMARTEMP
IN COMFORT

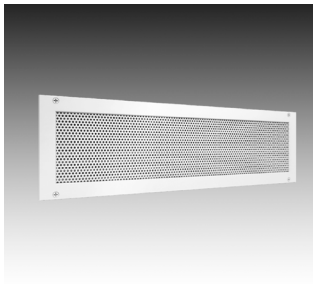


Displacement Outlets

Smartemp Displacement Outlets

Supply air, typically at 20°C, oozes from the displacement diffuser, which is mounted on or near the floor, to create a lake of cool air. Occupants are cocooned in the high quality air while heat and contaminants, displaced by convective currents and low level displacement ventilation, rise to a high level above the occupied zone where they are extracted close to the ceiling level.

Refer to www.temperzone.com for further information.



ADS-FD Auditorium Displacement Diffuser

Rectangular step displacement diffuser for location in vertical step face beneath seats in tiered auditoria and lecture theatres or in a staircase.

Volume flow rate range ≤ 60 l/s

Sound power level ≤ 15 dB(A)

Flanges Available with or without

Length Variable

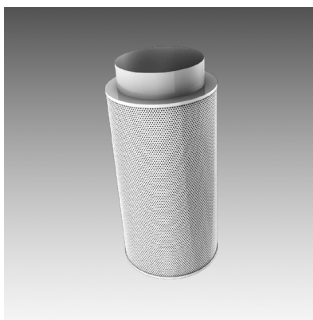
Depth 70 mm

Height 100 - 300 mm

Features

- For auditoria and halls with steps
- Diffuser built into step front
- With face flange - standard
- Without face flange - optional. Ends may abut for continuous look.
- Optional concealed fasteners available
- Slightly upward inclined, low velocity, low-turbulence displacement dispersion near floor
- Low sound power level

SMARTEMP
IN COMFORT



DDF-FD Drum Displacement Diffuser

Cylindrically shaped displacement diffuser for placement on the floor. Connection from above or below.

Volume flow rate range ≤ 600 l/s

Face velocity ≤ 0.3 m/s

Coverage Radius 5 - 10 m

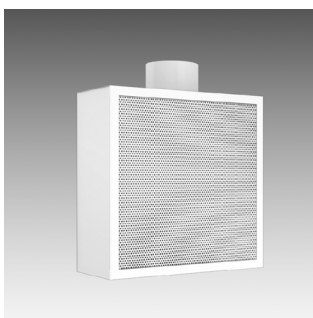
Sound power level ≤ 35 dB(A)

Nominal Sizes DN250, DN315, DN400, DN500

Features

- Robust, perforated metal drum discharge face
- Inner perforated cylinder provides low turbulence airflow
- Connection from above or below

SMARTEMP
IN COMFORT



RDW-FD Rectangular Displacement Diffuser

Rectangular displacement diffuser for installation on the floor, in a wall or free-standing.

Airflow rate range ≤ 450 l/s

Discharge velocity ≤ 0.25 m/s

Coverage 5 - 15 m

Sound power level ≤ 30 dB(A)

Features

- Removable, robust perforated metal discharge face.
- Removable air matt provides low turbulence airflow.
- Installed individually or adjacent to one another.
- Connection from above, behind or below.

SMARTEMP
IN COMFORT

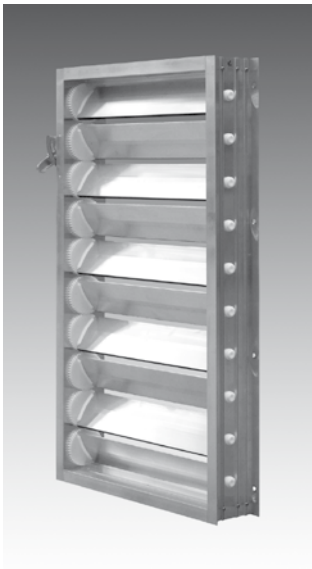


TRD Damper

TRD Air Regulating Damper

The TRD Air Regulating Damper controls the volume and/or pressure within air conditioning and ducted ventilation systems and in the economisers used in temperzone air conditioning units. Owing to its reliability, modularity and modern engineered simplicity it is now used in many applications which seek to create a sustainable environment and reduce the energy-costs of buildings.

Refer to www.temperzone.com for further information.



TRD Air Regulating Damper

Opposed blade airflow regulating damper for the control of volume and/or pressure within air conditioning and ventilation ducted systems and air handler units

Size Up to 1200 mm square
Larger size made up of multiple sections

Features

- Maintenance free aluminium extrusion construction
- High grade polyester drive gears
- Low friction moulded acetal bearings
- Flanged frame for easy installation
- Stainless steel drive shaft with optional locking quadrants or electrical actuator
- Aerofoil blades for minimal losses
- Available with spigot plates for round duct connection
- Optional powder-coat or anodised finish



Outside Louvres

Outside Louvres

The temperzone range of Outside Louvres allow air to be circulated into and out of buildings while restricting the access of water. Temperzone's Outside Louvres can be customised to suit any application and with clean contemporary styling they enhance the aesthetics of any commercial building.

Refer to www.temperzone.com for further information.



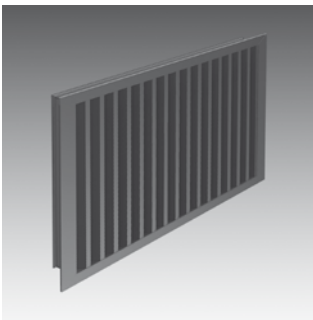
XAL Series Horizontal Outside Louvres

Fixed outside louvre utilising horizontal overlapping blades to minimise water ingress.

Volume up to 7,600 l/s
Maximum section size 2000 mm width
x 2000 mm height

Features

- Robustly constructed from aluminium extrusion with powder-coat finish for a long lasting and maintenance free life
- Optional expanded aluminium vermin mesh
- Flanged or channel frame (XAL-F or XAL-C)
- Two blade profiles offering single or double weather stops (XAL-2_ or XAL-4_)
- Suitable for intake and exhaust applications



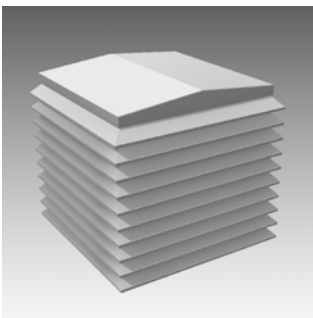
XAL-4VF Vertical Outside Louvres

Fixed outside louvre with vertical overlapping blades and double weather stops.

Volume up to 10,800 l/s
Maximum section size 2000 mm width
x 2000 mm height

Features

- Heavy duty aluminium construction with powder-coat finish for a long lasting and maintenance free life
- Double weather stops to minimise water ingress
- Optional expanded aluminium vermin mesh
- Flanged frame
- Stainless steel fasteners



PAL-4 Penthouse Louvres

With clean lines and robust construction the Penthouse Louvres are an attractive and effective solution to finish roof penetrations.

Volume up to 40,000 l/s
Maximum size 3000 x 3000 x 2000 mm

Features

- Aluminium construction with powder-coat finish for a long lasting and maintenance free life
- Blades feature double weather stops to minimise water ingress
- Optional expanded aluminium vermin mesh
- Suitable for intake and exhaust applications



Accessories

Air Distribution Accessories

Temperzone Air Distribution Accessories are designed to complement the temperzone range of diffusers. Temperzone Air Distribution Accessories come in a full range of sizes and orientations to suit all manner of projects. Many temperzone accessories can also be customised in the case of non standard specifications.

Refer to www.temperzone.com for further information.



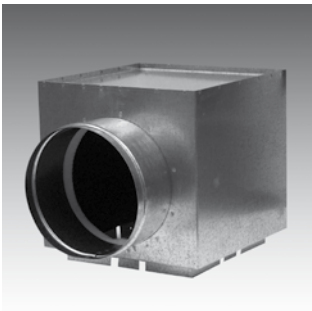
OBD Opposed Blade Damper

Controls air volume for balancing and fine adjustment.

Sizes Stock sizes to suit stocked grilles
Custom sizes made to order

Features

- Installs directly to neck of grilles/diffusers with clip fasteners
- Lever operated from the face of the grille/diffuser
- Not intended for use as a shut-off damper
- Aluminium construction
- Sized to suit grilles/diffusers



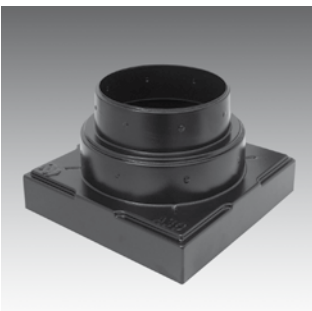
PLENUM Side Entry/Exit Plenum

Only for HSC-FD DN355/DN500-S595. Not available for any other grilles/diffusers.

Sizes Stock sizes to suit stocked grilles
Custom sizes made to order

Features

- 13mm insulated only
- Galvanised steel design



ADAPTOR Square to Round Adaptor

Available for selected square sizes only.

Sizes Customer sizes not available for MTQ.

Features

- Black plastic only (not available in galvanised steel)
- Non stock made to order in galvanised steel



Accessories



FLEXIDUCT Flexible Ducting

Temperzone Flexiduct is available in two types Nude or Insulated and is certified to AS 4254.

Flexiduct is available in 3 or 6 m lengths in the following nominal sizes:

Stock Ø100 (nude only), Ø150, Ø200, Ø250, Ø300, Ø350, Ø400 and Ø450 mm (insulated only)

Non stock (to order) Ø500, Ø550 mm

Features

- Certified to AS 4254 the Australian Standard for ductwork of air-handling systems in buildings
- Nude Flexiduct is manufactured using a tough metallised polyester laminate, has a smooth inner surface to minimise friction losses within the duct and maintain operating efficiency
- Insulated Flexiduct comprises a Nude inner core, wrapped in polyester insulation & sheathed in a silver fire rated metallised polyester sleeve
- Lightweight yet durable and strong, it retains its full diameter, even around 180° bends



DAMPERS Inline Dampers

For controlling air volume inline.

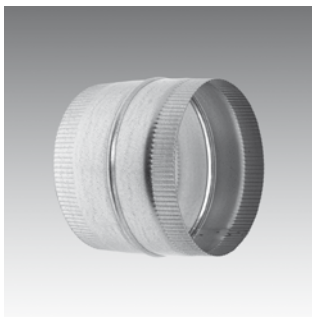
Inline dampers are available in the following nominal sizes:

Manual Ø150, Ø200, Ø250, Ø300, Ø350 mm
Other sizes on request

Electric (24V open/closed) Ø200, Ø250, Ø300, Ø350 mm

Features

- Galvanised steel construction
- Available in manual and electric



JOINER Duct Joiner

For joining flexible ducting.

Duct joiners are available in the following nominal sizes:

Stock Ø150, Ø200, Ø250, Ø300, Ø350 mm
Other sizes on request

Features

- Galvanised steel construction



Custom Design

As we continually push the boundaries of contemporary architectural design and increasingly focus on our environmental impact temperzone sees a greater demand for air distribution equipment that must be customised to specific requirements. Over 30 years of working closely with consultants, architects and contractors to provide customised solutions has set temperzone apart as a leader in customising air distribution equipment.

With a well equipped manufacturing plant and dedicated design engineers temperzone has the expertise to quickly and cost effectively create unique solutions to meet the demands of any project. Utilising CAD 3D modelling and prototyping temperzone's experienced design engineers work closely with clients to help formulate the best solution to achieve the desired outcome.

From simple alterations to the dimensions and finish of standard products, to the development of completely unique air distribution equipment, temperzone has the experience to ensure the project is a success.





Temperzone Ltd

ENQUIRIES

New Zealand: nzsales@temperzone.com
Australia: sales@temperzone.com.au
Singapore: sales@temperzone.com.sg

NEW ZEALAND

Auckland: (09) 279 5250
Hamilton: (07) 839 2705
Wellington: (04) 569 3262
Christchurch: (03) 379 3216

temperzone.com
temperzone.biz



Note: The manufacturer reserves the right to change specifications at any time without notice or obligation.

